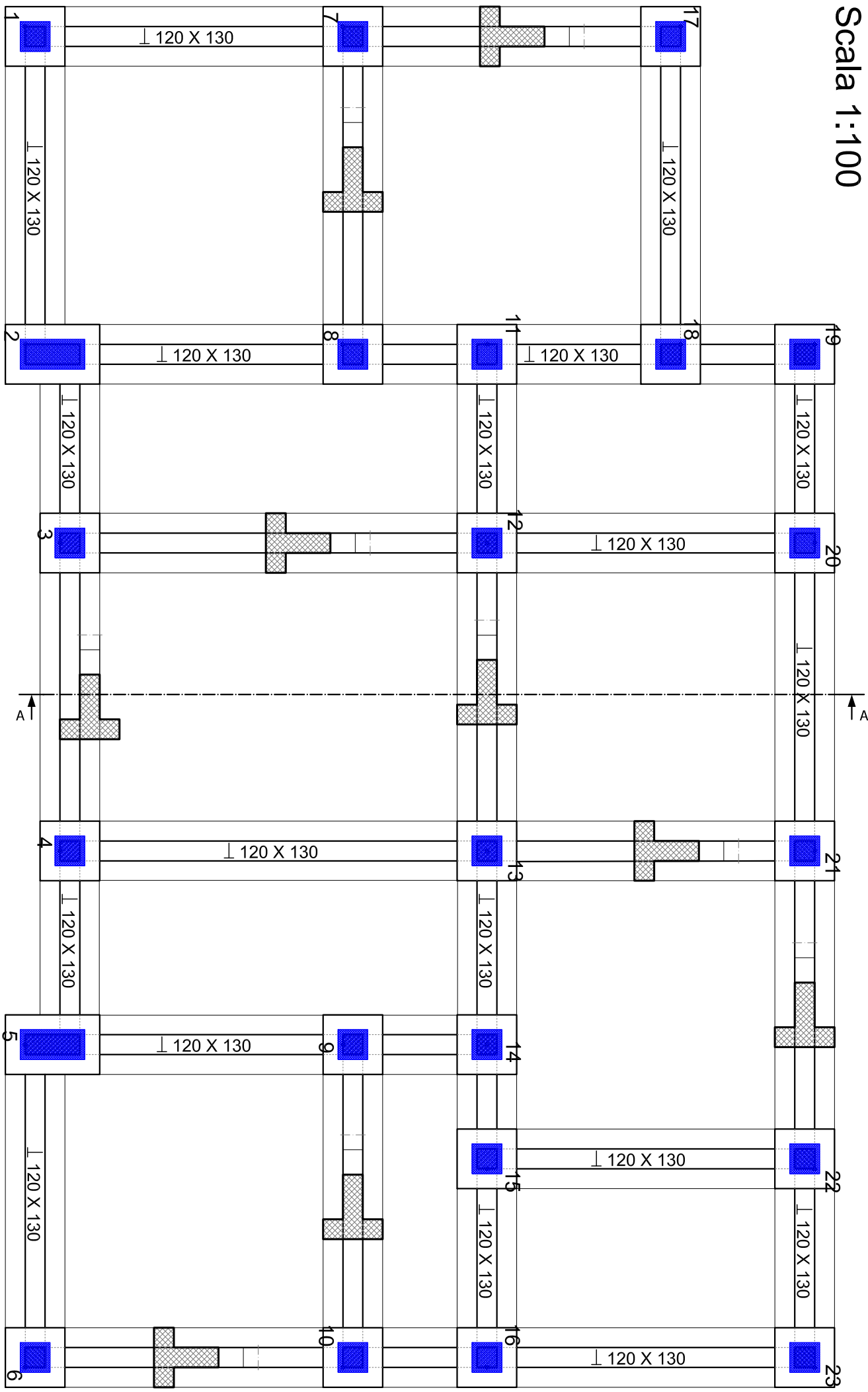


INTERVENTI STRUTTURALI: INTERVENTO DI RINGROSSO PILASTRI

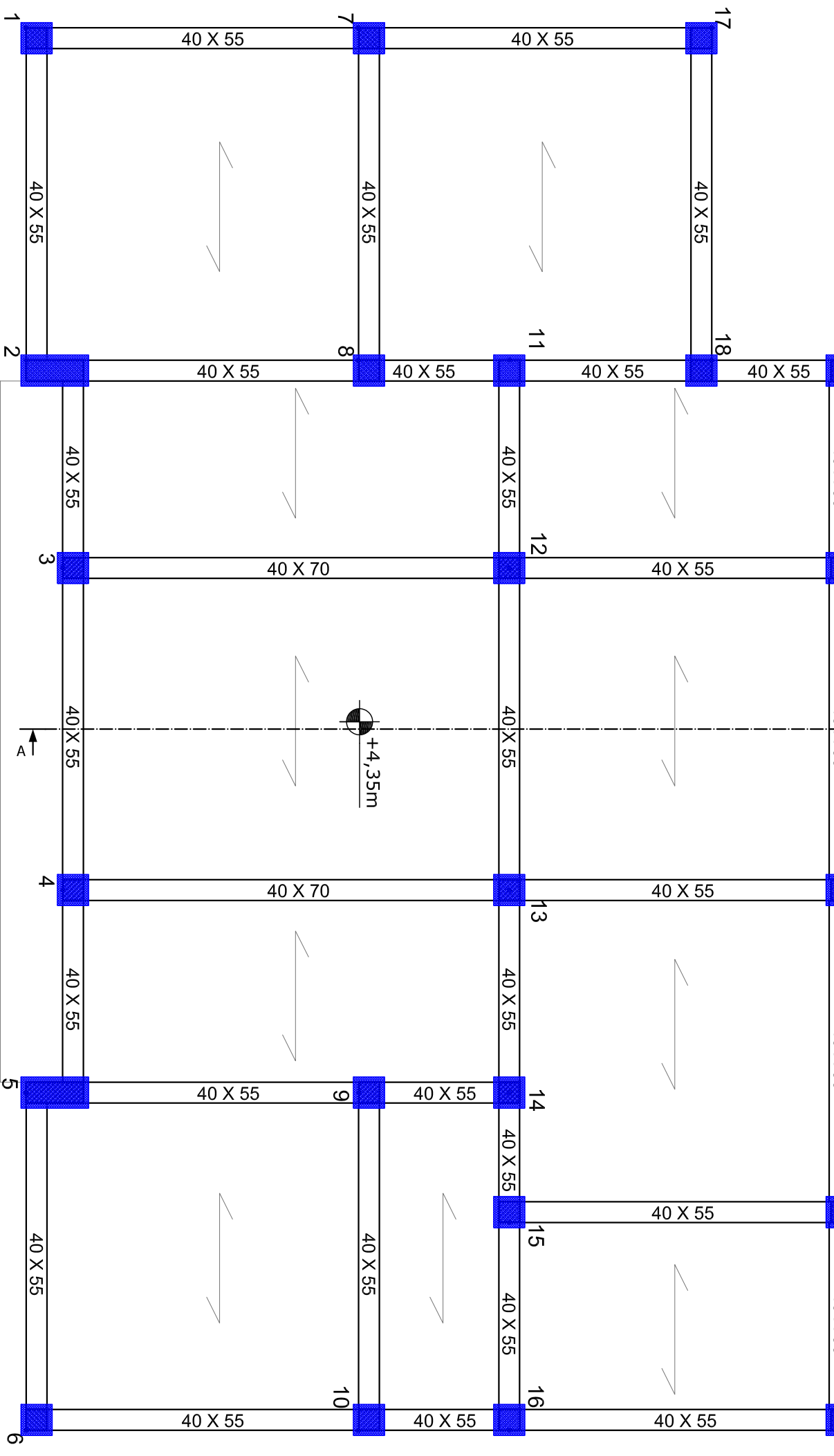
PIANTA FONDAZIONI

Scala 1:100



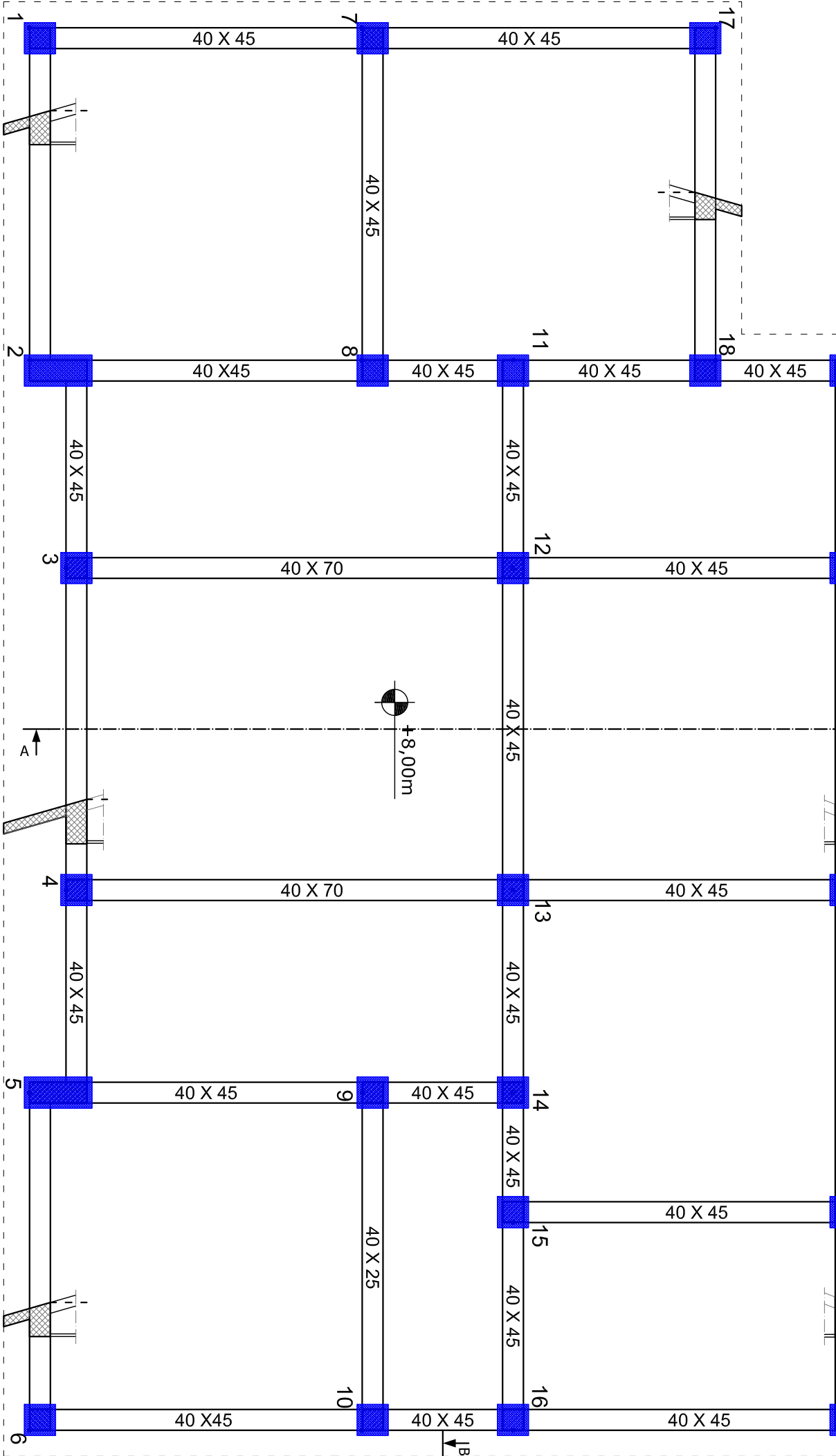
CARPENTERIA I LIVELLO

Scala 1:100



CARPENTERIA II LIVELLO

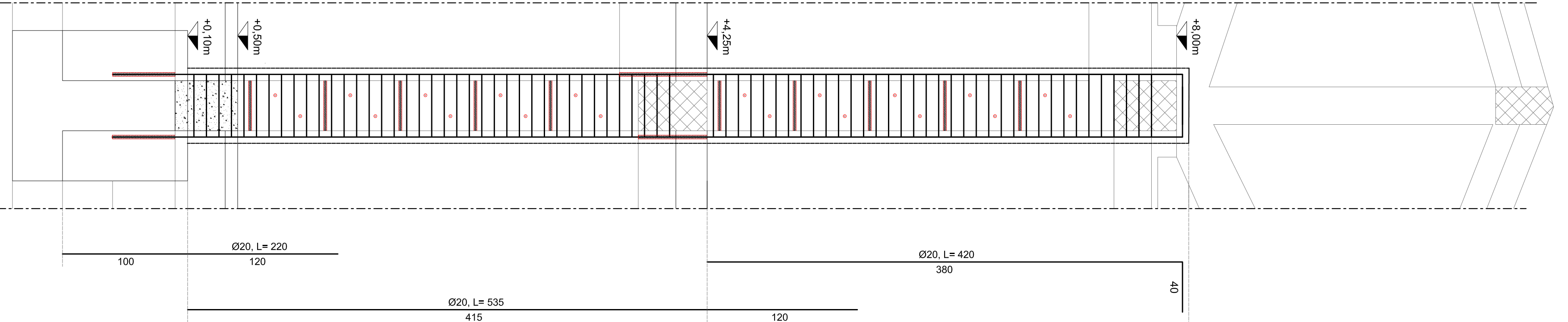
Scala 1:50



PILASTRO TIPO 1

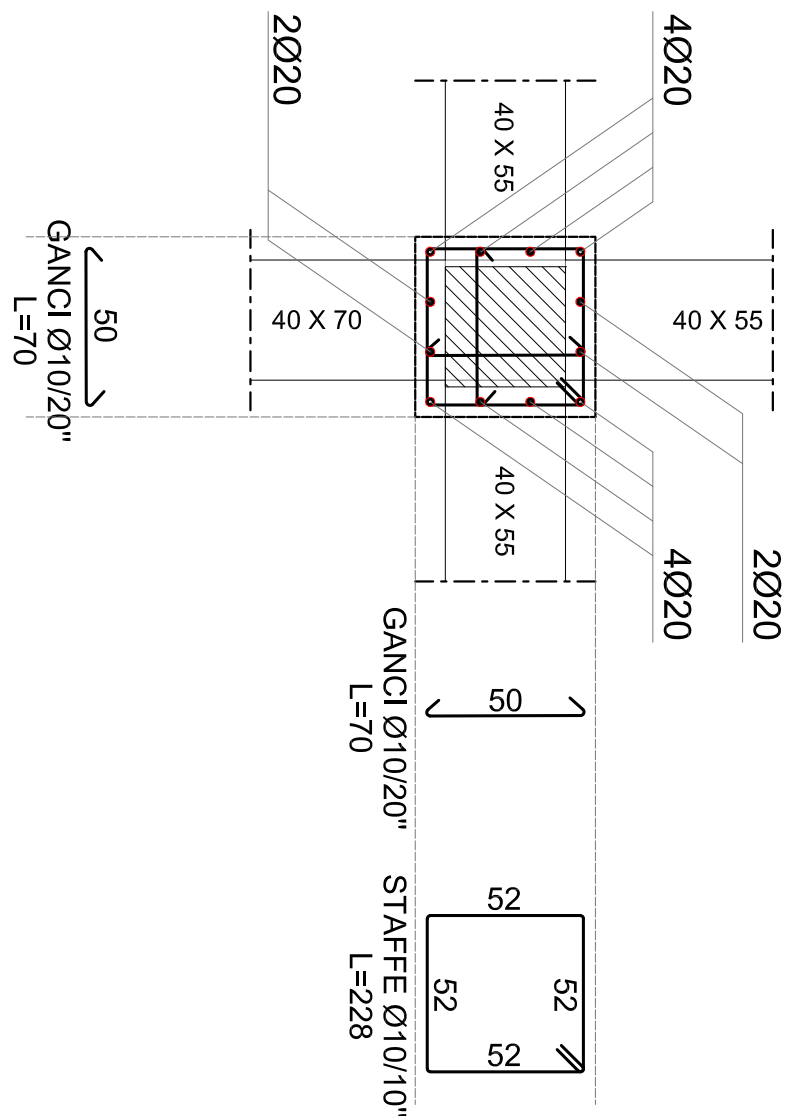
STRALCIO SEZIONE

Scala 1:25



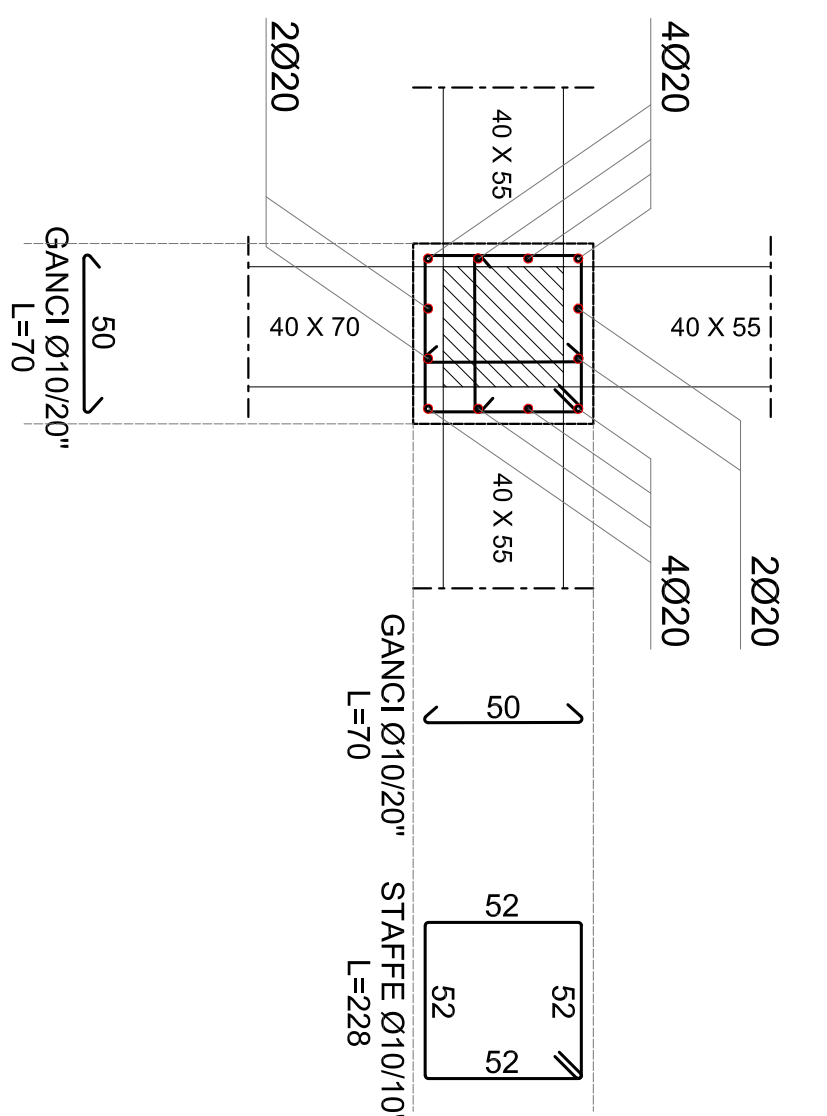
STRALCIO CARPENTERIA II LIVELLO

Scala 1:25



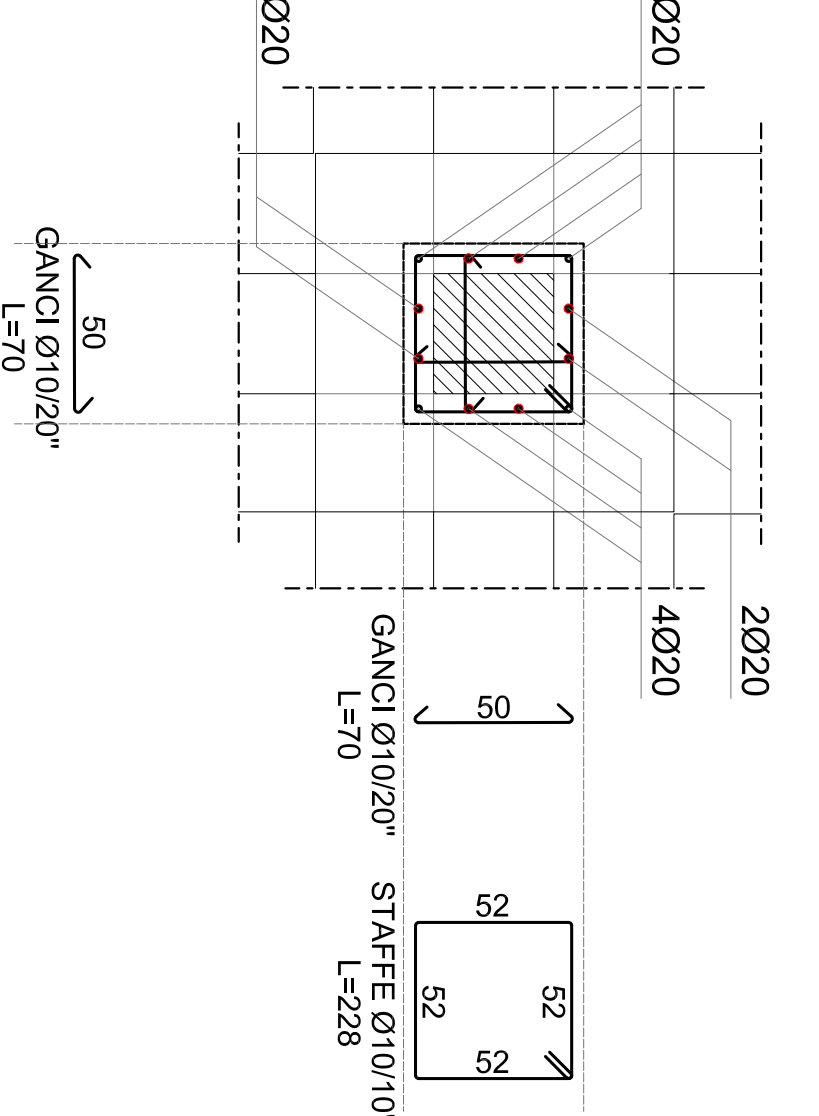
STRALCIO CARPENTERIA I LIVELLO

Scala 1:25



STRALCIO PIANTE FONDAZIONI

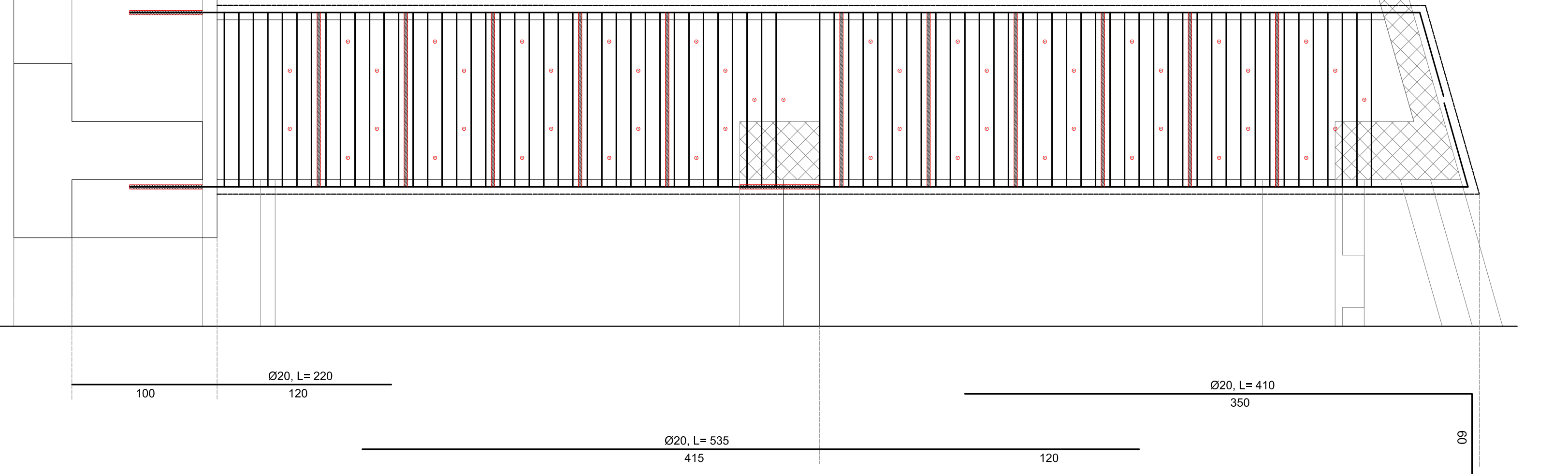
Scala 1:25



PILASTRO TIPO 2

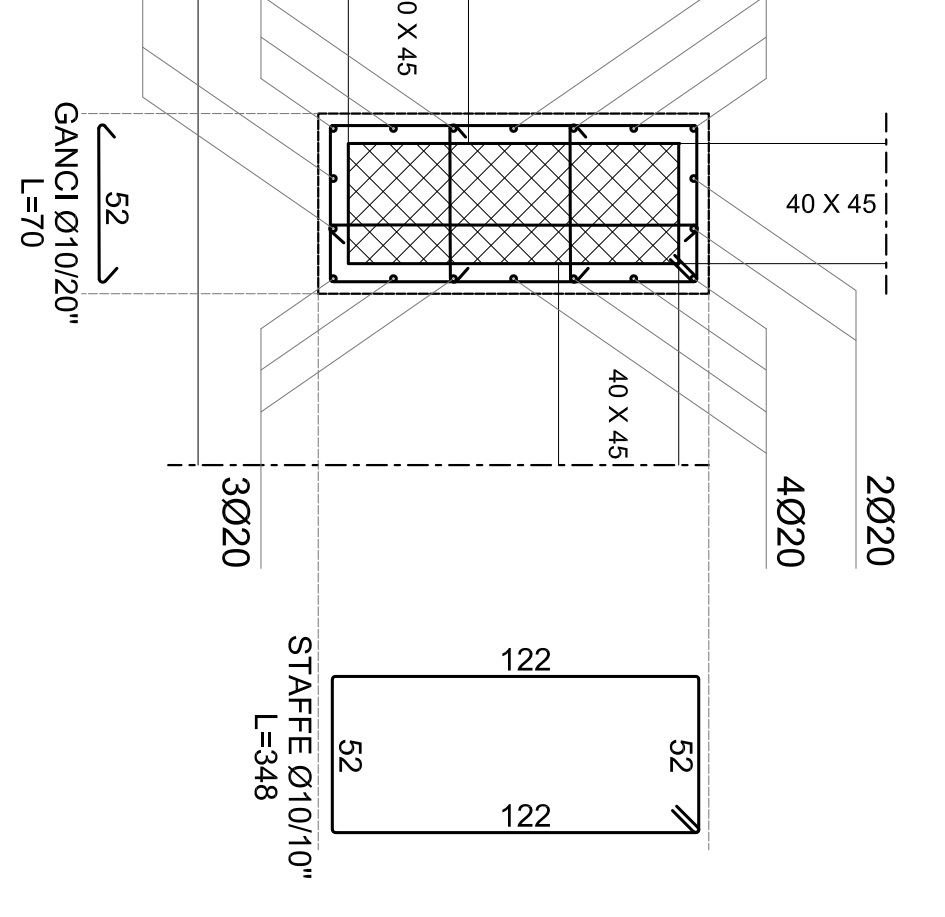
STRALCIO SEZIONE

Scala 1:25



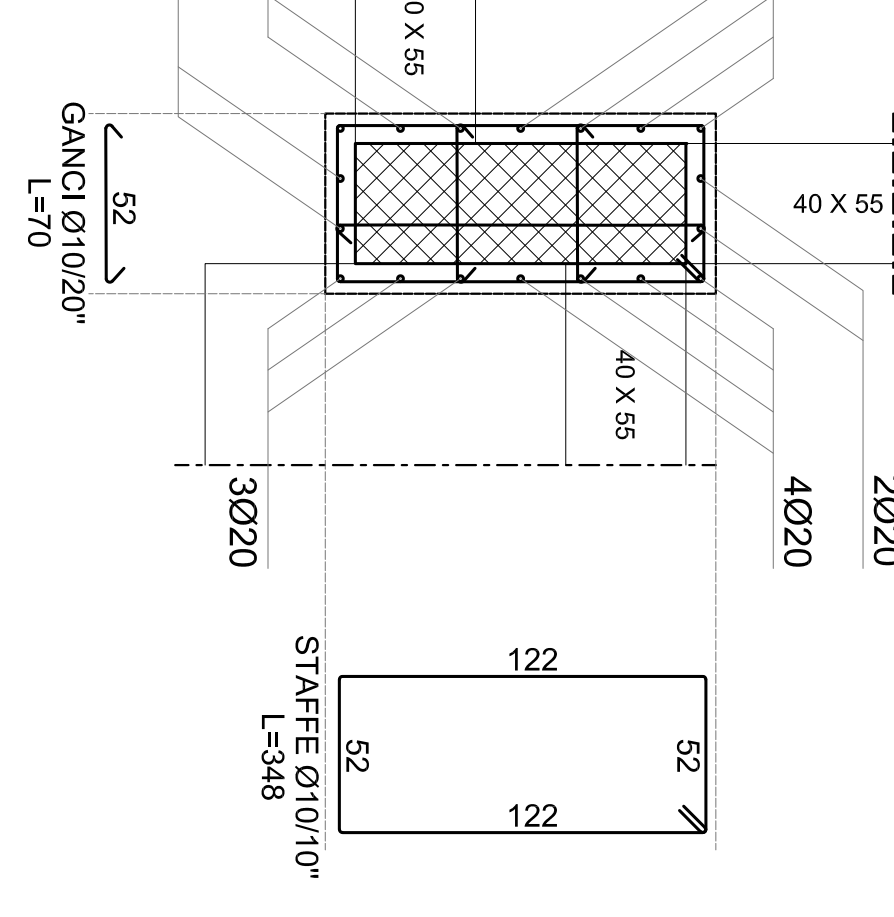
STRALCIO CARPENTERIA II LIVELLO

Scala 1:25



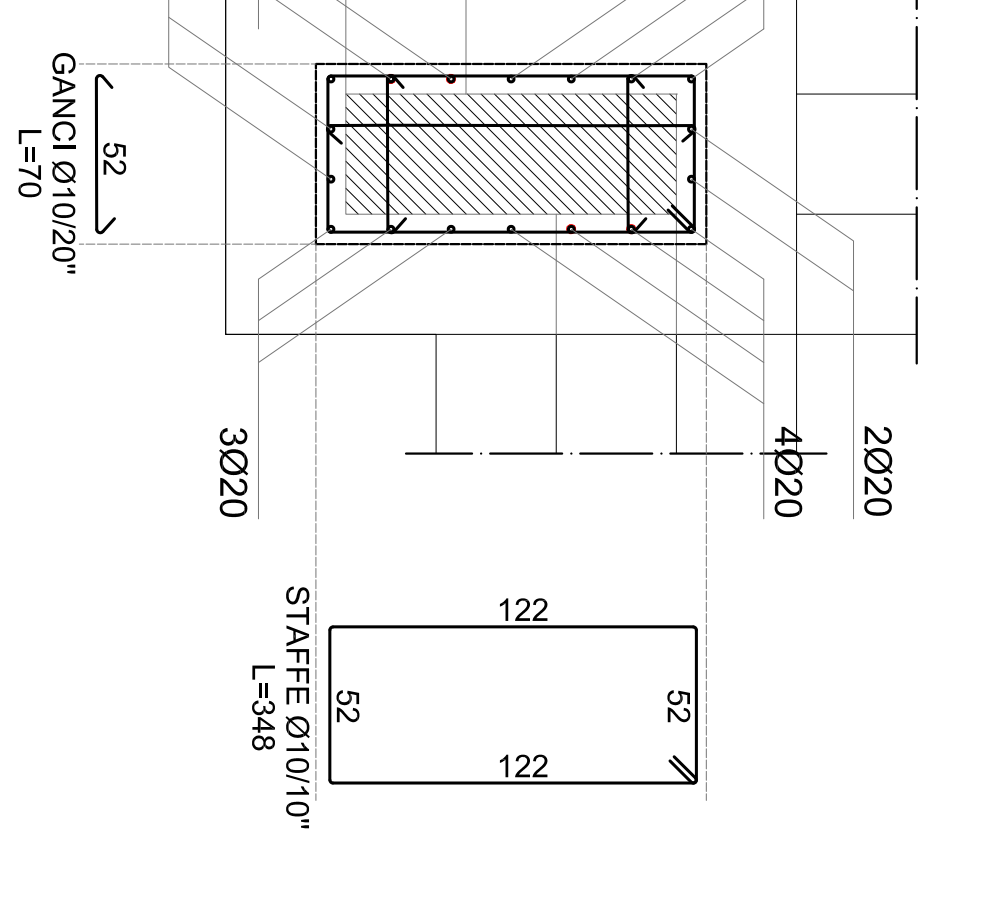
STRALCIO CARPENTERIA I LIVELLO

Scala 1:25



STRALCIO CARPENTERIA I LIVELLO

Scala 1:25

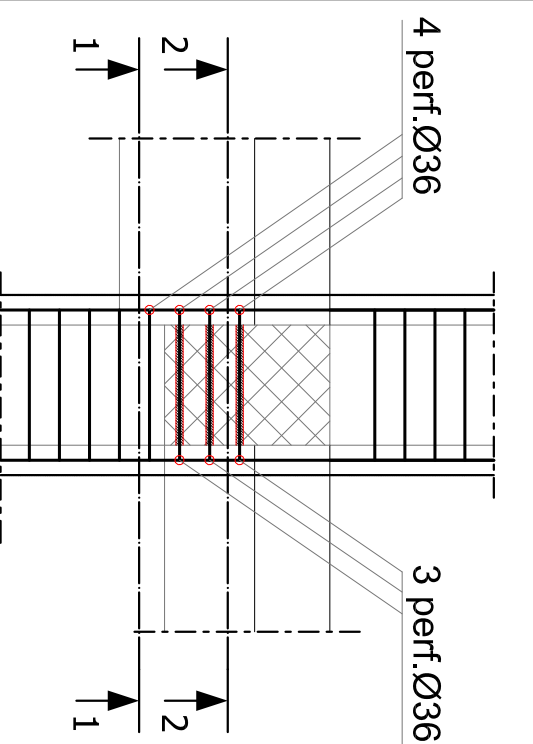


MATERIALI

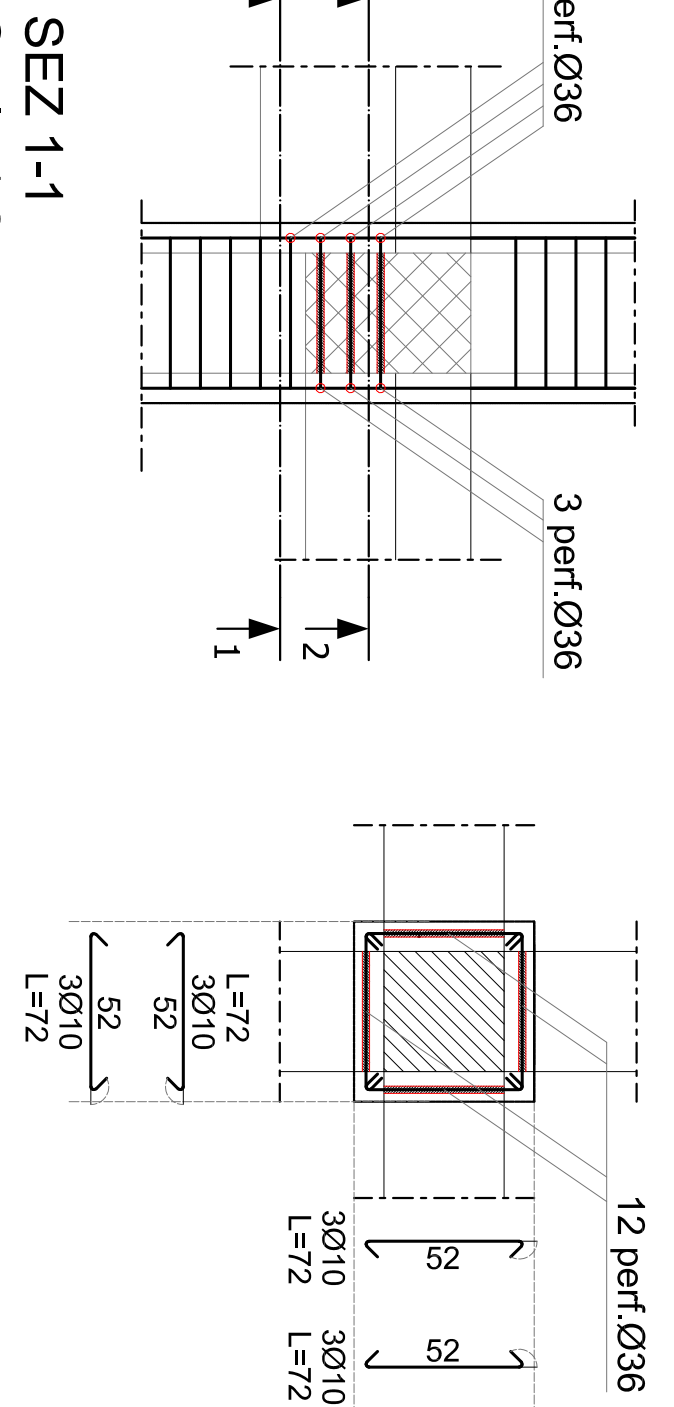
GALCESTRUZZO	Classe di Resistenza : C32/40 Classe di Lavorabilità : S5 Dimensione massima degli Inerti : d=20mm Rapporto ac : : 50/60
ACCIAIO TIPO B450C	Rapporto ac : : 50/60
CORRIFERRO	CORRIFERRO E INTERFERRO minimo 30 mm

PARTICOLARE STAFFE NEI NODI

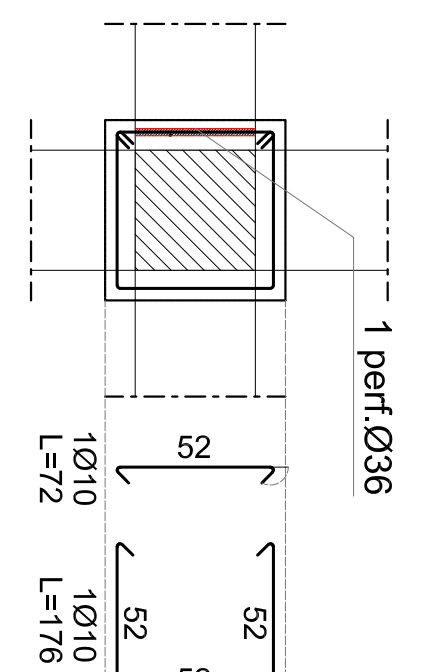
SEZ A-A  
Scala 1:25



SEZ 2-2  
Scala 1:25



SEZ 1-1  
Scala 1:25



PROVINCIA DI COSENZA

INTERVENTO DI ADEGUAMENTO SISMICO  
DELL'EDIFICIO SEDE DELL'ISTITUTO  
PROFESSIONALE INDUSTRIA E  
ARTIGIANATO "IPSA DI BOCCHIGLIERO"

Progetto Esecutivo

Oggetto: STATO FUTURO  
INTERVENTI STRUTTURALI  
INTERVENTO DI RINGROSSO PILASTRI

Data: Novembre 2020  
ELABORATO :  
Scala 1:100/ 1:25  
CODICE:  
IP.15.02

Responsabile del Procedimento  
(Ing. Piero Francesco FARFALLA)  
Progettista  
(Ing. Francesco PORCO)

